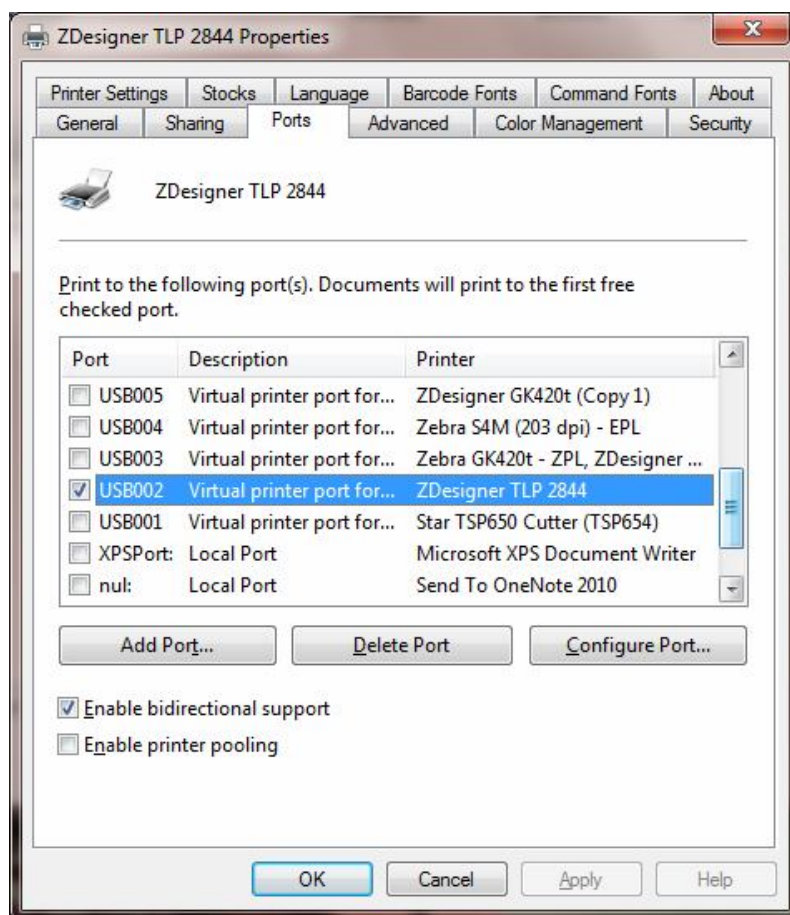


Proverite, da li je samo jedan ispravni drijver na sistemskom portu kojeg koristite.

Na slici koristimo port USB002 i drijver ZDesigner TLP 2844: (kod Vas će biti drugačije USB001 ...)



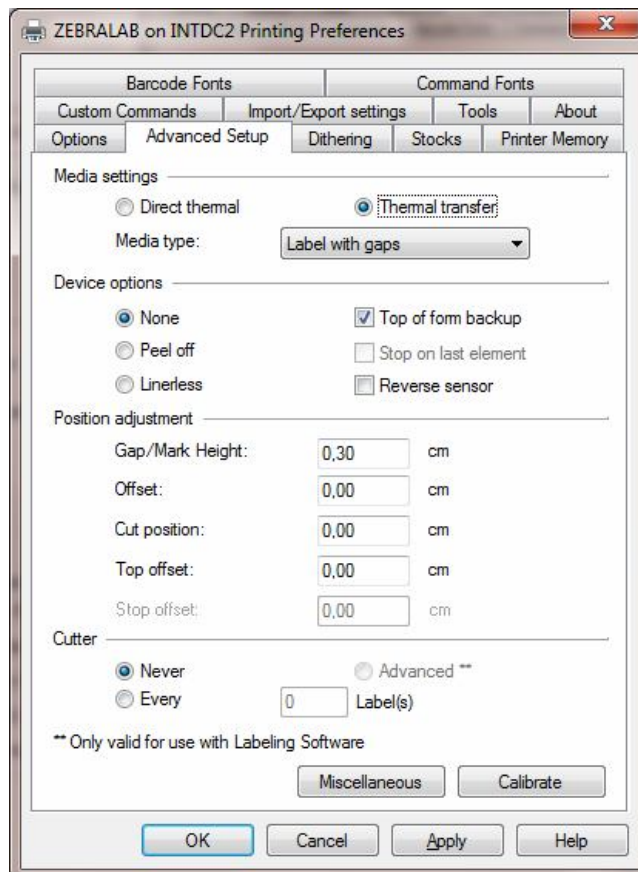
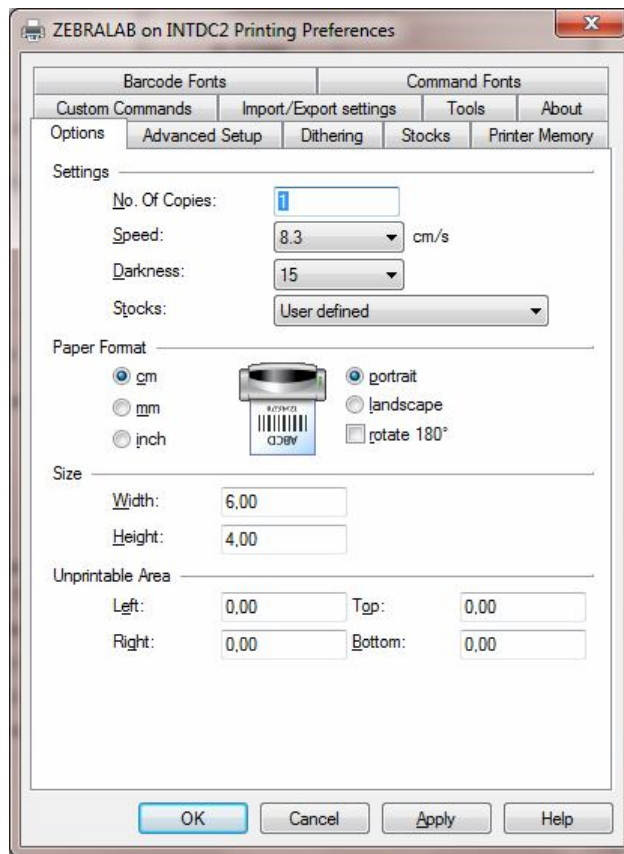
Verzija drajvera mora biti **2.6.42**

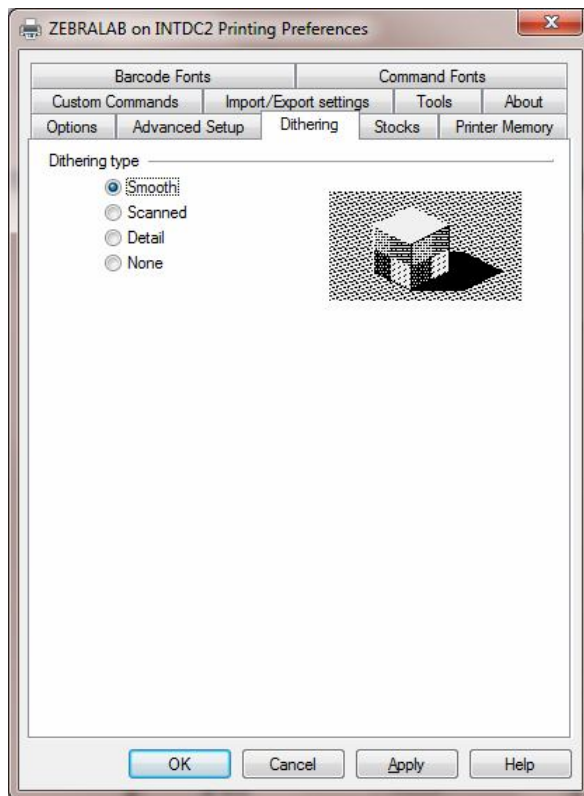


Prelazimo na Windowse u meniju pod **Printers and Faxes** kod odabranog printera za nalepnice –

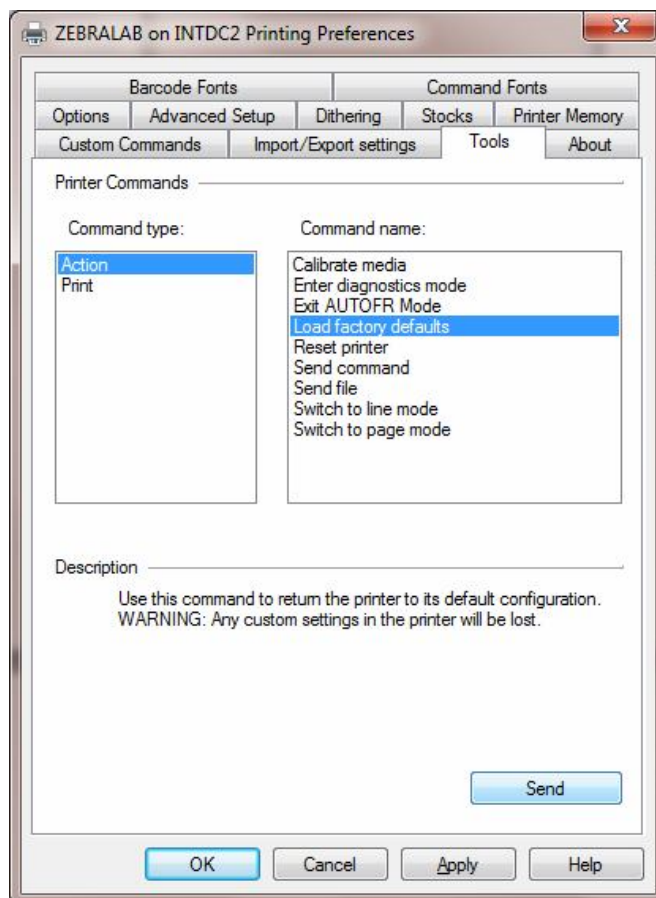
ZDesigner TLP 2844 desnim klikom miša odaberete **Pinting Preferences**.

Podesite vaš drajver kao na slikama dole:

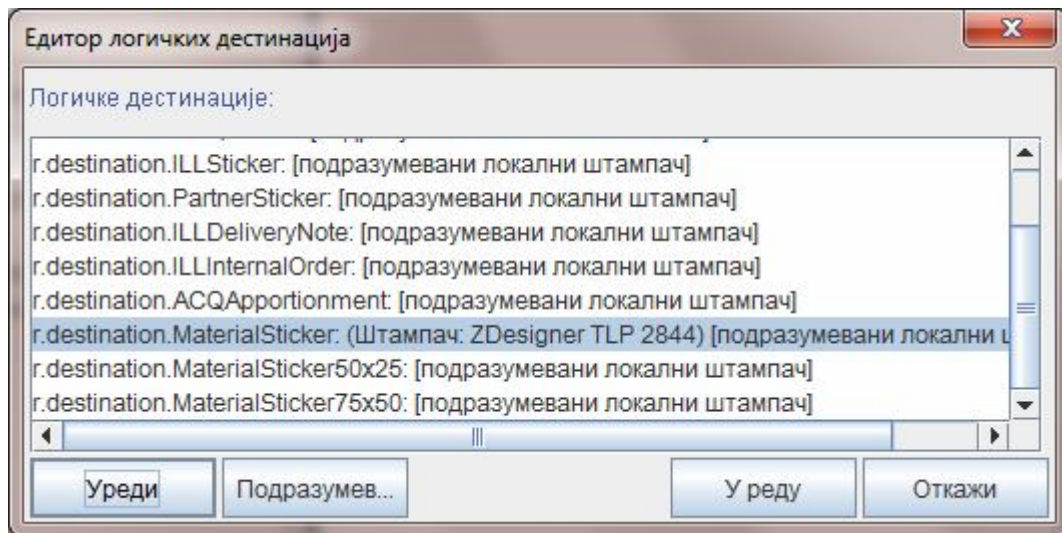
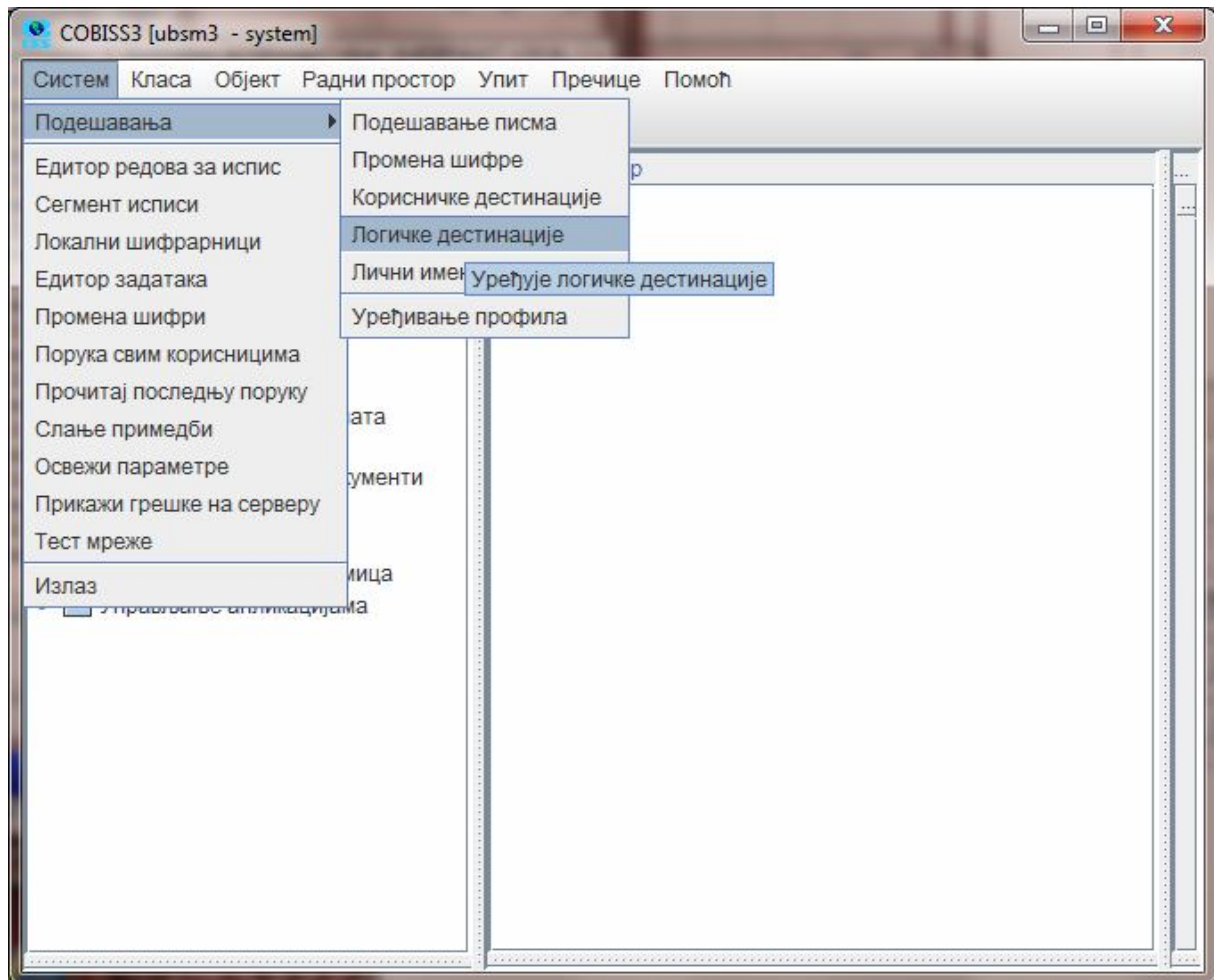


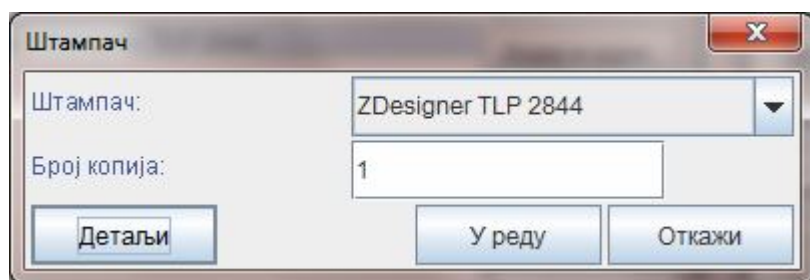
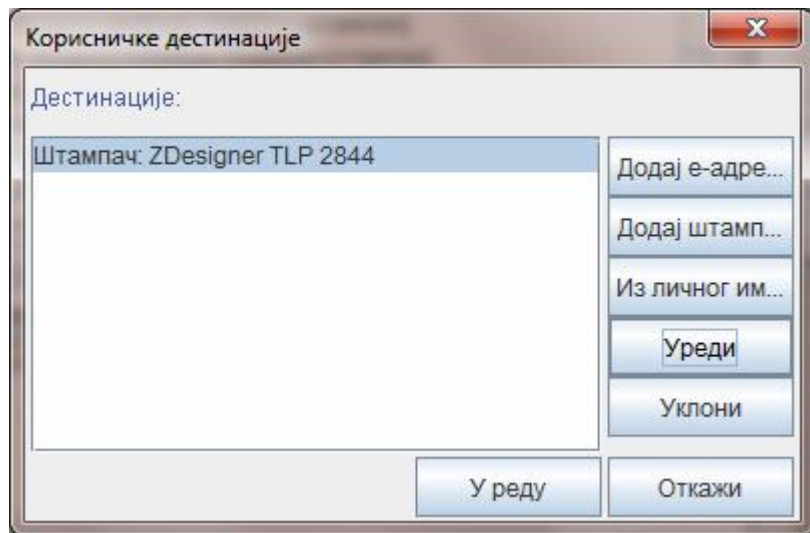


Inicializacijski parametri štampača:



Pre štampanja u COBISS3 moraju se podestiti logičke destinacije





Режим штампања: Графички !!!!**Veoma važno**

